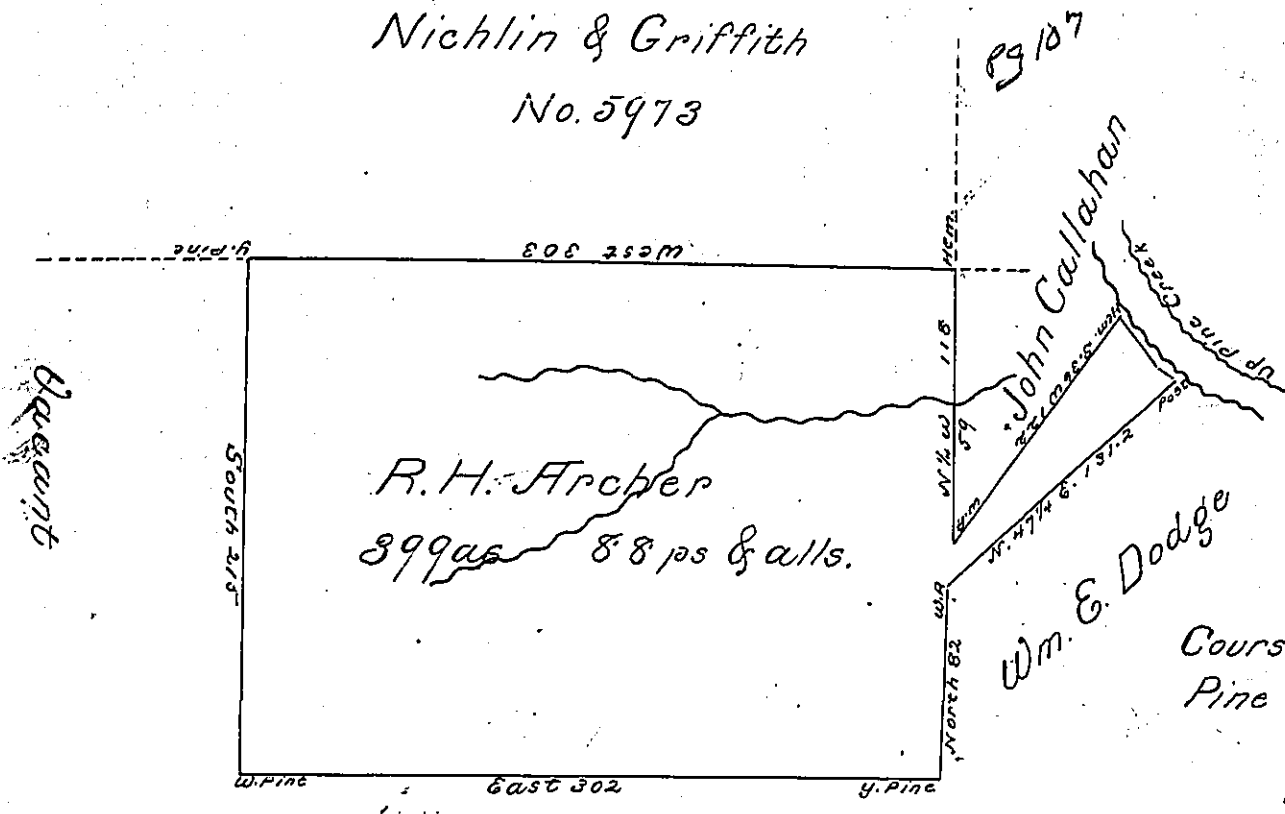


Nichlin & Griffith  
No. 5973



Courses & Dist<sup>s</sup> up  
Pine Creek

N. 53. W. 6  
N. 41. W. 28 He  
of Jno. Callahan

Vacant 89 51

Situate in Brown Township County of  
Lycoming on the West side of Pine Creek and  
bounded as above described Surveyed to Robert  
Harris Archer on the Second day of September  
1839 by virtue of his Warrant for 400 acres dated  
the 6th day of March 1839 containing three hundred  
and Ninety Nine Acres and Eighty Eight perches  
with allowance of six per cent for Roads &c.

Alexander H. McHenry  
D.S.

To Jacob Sallade Esquire  
Surveyor General

IN TESTIMONY that the above is a copy of the original remaining on file in  
the Department of Internal Affairs of Pennsylvania, made  
conformably to an Act of Assembly approved the 16th day of  
February, 1833, I have hereunto set my Hand and caused  
the Seal of said Department to be affixed at Harrisburg,  
this fifth day of December 1899

James W. Latta  
Secretary of Internal Affairs.

